

HP Sure Run



keep reinventing

Protect the applications that protect your PC. HP Sure Run¹ helps keep critical processes running, even if malware tries to shut them down. Hardware-enforced by the HP Endpoint Security Controller, HP Sure Run helps guard against malicious attacks on applications and processes.

Security processes and applications keep your PC safe

A variety of software processes and applications keep your PC secure while you work—everything from antivirus software to cryptographic services. These processes help protect your PC against malware, secure your data, guard against unauthorized access, and more.

Malware often targets these key defenses in its attacks, attempting to turn them off or disable them in order to gain greater access to your PC.

HP Sure Run keeps critical processes running

HP Sure Run thwarts attackers by keeping your defenses up and running.

From its secure position in the PC's hardware, HP Sure Run guards key security processes against malware attacks that try to disable them. It monitors them, alerts the user of any changes, and restarts them automatically if they're stopped.

HP Sure Run can guard not only key Windows processes—like antivirus and firewall protections in Windows® Security Center—but also HP features like HP Client Security Manager Gen4, HP Sure Click², and more.

Hardware-enforced by the HP Endpoint Security Controller

HP Sure Run itself is hardware-enforced by the HP Endpoint Security Controller, the same trusted hardware component behind HP Sure Start Gen4³, making it more secure than software alone.

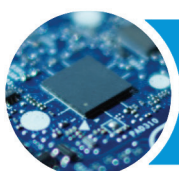
Extending this self-healing capability into the operating system (OS) with HP Sure Run enables HP to defend your PC against attacks, even if they've never been seen before.

Manageability

Manageability is key to securing an entire organization.

Small businesses can manage HP Sure Run locally using HP Client Security Manager Gen4 to select which processes are protected.

For enterprise users, HP Sure Run is designed for easy remote manageability using the HP Manageability Integration Kit Gen2⁴ plug-in for Microsoft® System Center Configuration Manager, enabling IT to set policies for protected processes.



HP Endpoint Security Controller

HP Sure Run

Security Processes
Ex: Windows Security Center

HP Sure Run is hardware-enforced by the HP Endpoint Security Controller.

Frequently asked questions:

Q: How do I enable HP Sure Run?

A: HP Sure Run can be enabled locally in HP Client Security Manager Gen4. A customized PIN identifies you as the user of the PC and enables HP Sure Run to begin protecting your system.

Q: Can I customize which processes are protected by HP Sure Run?

A: Yes. You can enable or disable protection for a set list of processes in HP Client Security Manager Gen4 (or via HP Manageability Integration Kit Gen2¹, if you are in a managed IT environment).

Q: I use a third-party antivirus program. Can HP Sure Run protect it?

A: HP Sure Run protects the Windows Security Center, which is compatible with many antivirus solutions.

If you choose to install third-party antivirus software, HP Sure Run can ensure that it remains enabled as long as it is integrated with Windows Security Center.

Q: What does it mean when you say HP Sure Run is hardware enforced?

A: HP Sure Run is backed by the HP Endpoint Security Controller, a unique hardware component built into HP Elite PCs. This ensures that HP Sure Run, once enabled, remains active.

Q. What happens when a protected process is attacked?

A: When HP Sure Run detects a threat, it will notify the user.

Before attempting to restart the process, HP Sure Run will verify that any files or registry keys associated with it are as expected. This protects against malware that might try to replace a key process.

Once it has confirmed its authenticity, HP Sure Run will restart the process. It will continue even against repeated attempts to turn off the process.

Q: How will I know if HP Sure Run responds to an attack?

A: You will be notified in the Windows Action Center. The action will also be logged in the Windows[®] Event Log and can be viewed in the HP Client Security Manager Gen4 Notification Panel.

Technical Specifications:

Platform availability:

- HP Sure Run is available on HP Elite products equipped with 8th generation Intel[®] or AMD processors

OS compatibility:

- Windows 10

Protected processes:

- OS processes
- HP security tools
- Third-party processes
- HP processes (enabled via HP Manageability Integration Kit)

Learn more at www.hp.com/go/computersecurity

© Copyright 2018. HP Development Company, L.P. The information contained herein is subject to change without notice. The only warranties for HP products and services are set forth in the express warranty statements accompanying such products and services. Nothing herein should be construed as constituting an additional warranty. HP shall not be liable for technical or editorial errors or omissions contained herein. Windows is either a registered trademark or trademark of Microsoft Corporation in the United States and/or other countries. Intel is a trademark or registered trademark of Intel Corporation or its subsidiaries in the U.S. and/or other countries. AMD is a trademark of Advanced Micro Devices, Inc.

1. HP Sure Run is available on HP Elite PCs equipped with 8th generation Intel[®] or AMD processors.
2. HP Sure Click is available on select HP platforms and supports Microsoft[®] Internet Explorer and Chromium[™]. Check <http://h20195.www2.hp.com/v2/GetDocument.aspx?docname=4AA7-0922ENW> for all compatible platforms as they become available.
3. HP Sure Start Gen4 is available on HP Elite and HP Pro 600 products equipped with 8th generation Intel[®] processors.
4. HP Manageability Integration Kit can be downloaded from <http://www.hp.com/go/clientmanagement>.

